

Dumore Enterprises Ltd.

COMPANY PROFILE



Dumore Enterprises Ltd.

About Company

Dumore Enterprises Ltd. is a leading provider of oilfield and industrial supplies, vehicle rental, equipment rental, transportation, joint integrity and pipeline modification solutions to the Oil & Gas, Petrochemical, Construction and Manufacturing sectors in Trinidad and Tobago.

Founded in 1981 by brothers and Directors Dan Jodhan, Joey Jodhan, Jaisree Jodhan and Roddy Jodhan, Dumore Enterprises is a privately owned, well-reputed company that is setting the standard in the industry. Initially established as a vehicle rentals and transportation firm, Dumore grew quickly, expanding to include oilfield and industrial supplies and auto/equipment repair services.

Today, Dumore is continuing to set the standard by developing innovative products and service offerings that effectively address the ever-changing needs of our customers and their respective industries.



Dumore Enterprises Ltd.

Our Commitment

Our Vision

To be a Global Leader in Integrated Solutions – through our People, our Partnerships and our Performance.

Our Mission

Unlocking Value through Innovation, Transformation, Digitization and Integrated, Green Solutions.

Purpose Statement

We DU-MORE to meaningfully improve the lives of our customers, stakeholders and our communities



Dumore's Core Values

What We Stand For

A

Authenticity

We shall be authentic and respectful in our interactions and shall value diversified perspectives, cultivating honest, constructive communication.

C

Committed

Commitment to integrity, continuous improvement and agility to achieve the successful transformative growth of our business and our community.

T

Transparency

Being honest and accountable in all transactions.

I

Innovation

Being inclusive, innovative and solution-oriented to create value, sustainable growth and a safe environment.

O

Optimism

We rise to deliver solutions by focusing on excellence and leveraging the competencies of our team.

N

New Horizons

We continuously seek new horizons, products, customers, markets and opportunities while forging partnerships and protecting the environment.

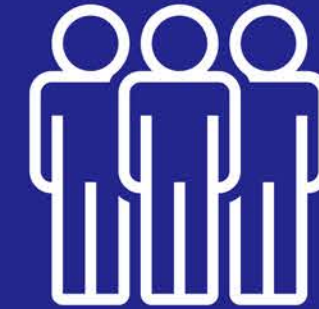
QHS&E



At Dumore we understand that a culture of Quality, Health, Safety and Environmental excellence is essential to our success. We maintain a current STOW HSE Management System certification (High Level) across all Divisions.



As we continuously evolve our products and services to the highest standards it enables us to safeguard our people and the environment where we work and live.



In this way our success translates into our customers success!



GREEN INITIATIVES



PLASTIC PACKAGING

Phase out of use for all delivered items to cardboard boxes – 2010



CNG

CNG fleet investment and pilot project. Over 50 million kilometres driven on CNG – 2012



LIGHTING

Gradual upgrades to power efficient and LED fixtures company wide – 2017



BUILDING AND FACILITY MAINTENANCE

- Rainwater Harvesting
- Electrical grounding and phase balancing project
- Natural lighting design inputs

Dumore Enterprises Ltd.

Our Divisions



Oilfield & Industrial
Supplies



Dutorx - Mechanical
Services & Equipment



Vehicle Rentals



Transport



Laydown Yards &
Commercial Storage



01



DUMORE
OILFIELD & INDUSTRIAL

OILFIELD & INDUSTRIAL

MANUFACTURING AND DISTRIBUTION

Oilfield & Industrial

This division is a key supplier and service provider to Oil and Gas, Petrochemical, Energy, Construction Industries and other Industrial sectors.



We Represent

- 3S - Superior Sealing Services
- ITW Ramset/Red Head
- Beldam Crossley
- Unistrut
- Kluber Lubricants
- Brighton Best International
- Norbar Torque Tools
- Video Ray
- ASC Engineered Solutions
- Ideal Energy Solutions
- Knapp Polly Pig
- Band-It
- Z.R.C.
- Enerpac - Hydratight, Mirage Machines, Equalizer
- Vibra-Tite

Services

- Gasket and Stud Manufacturing
- Coring Operations
- Power Actuated Tool Operations
- Gasket Technical Support Services
- Specialty Products

Dumore Enterprises Ltd.

Gasket Manufacturing and Supply

Dumore is a licensed manufacturer of gaskets. We locally manufacture –

- Soft Gaskets – ring type, full face and custom shapes
 - Flexible Graphite
 - PTFE – Teflon
 - Rubber – Neoprene, EPDM, Insertion
- Spiral Wound Gaskets – G, GS, GSI styles in various materials
 - SS, PTFE, Alloy20, Graphite
- Heat Exchangers – Double jacketed graphite fill, standard and custom sizes and shapes – ARMCO Iron, SS

WE SUPPLY THE LATEST GASKET TECHNOLOGY

- Ring Joint Gaskets – Oval, Octagonal, RTJ to RF adaptors
- Kammprofile Gaskets
- CorruKamm Gaskets
- Isolations Gasket Kits – buried and offshore piping



Stud Manufacturing and Stud/Fastener Supply

We stock a variety of fasteners in various materials and strengths, which include bolts, nuts, washers, machine screws, self tapping and thread forming screws, socket head and socket set screws in both imperial and metric sizes.

We also cut, chamfer and stamp studs to any desired size in various material classes -

1.

Regular Steels -
4140 Steel

2.

Stainless Steels -
ASTM A193, A320 - Grade
B8M, B8T

3.

Alloy Steels -
ASTM A193 Grade
B7, B16, L7 Alloys

4.

Non Ferrous Materials -
Inconel 191 - cupronickel
alloy



Oilfield & industrial Supplies

Specialty Products/Services

- Bolt Torquing Lubricant – Vibratite
- Engineered Spring Hangers
- Belleville Disc Spring Washers
- Pallet Racking – supply and installation
- Unistrut – Metal Framing and support Systems
- Coring Services – onsite wet coring and bits – core and drill
- Concrete Anchoring Solutions – supply and install
- Powder Actuated Anchoring and Fastening Solutions
- Gloves – Industrial grade, impact resistant and cut resistant levels
- Pump and Valve Packing
- ZRC Products – Cold galvanizing compounds
- High Quality Hand Tools – spanners, wrenches, tool sets, sockets
- Thread Repair and Thread Locking Products
- Bolt Torquing and Tensioning Tools and Equipment – pipe cutting, hydro testing
- Kluber Premium Lubricants – FDA approved, Low or High Temp lubricants, High Loads
- Oilfield & Industrial Supplies - Providing the material that connects and seals your world!



02



DUTORX
CUSTOM SOLUTIONS

DUTORX Custom Solutions

A new member of the Dumore Group, Dutorx is a dynamic mechanical and technical solutions provider geared towards the petrochemical, industrial and manufacturing sector in the region.

We provide custom problem-solving processes using our experience and knowledge backed by some of the best tooling and cutting-edge technology.

With our in-house Technical labor force we carry over 15 years experience in the fields of Bolt Torquing/ Tensioning, Cold Pipe Cutting, Hydro-testing, Flange Management and Quality Control on critical path joints.

We also provide training accredited by ECITB for Mechanical Joint Integrity and Joint Integrity Assurance.



Dutorx Custom Solutions

Through Dumore we represent Enerpac/ Hydratight/Mirage/ Equalizer brands; Hydraulic Torque Tools, Tensioners, Clamshells, Flange Facing, Flange Spreaders, Nut Splitters and other specialized equipment. We carry a large fleet of these tools for rental.



We also service, repair and calibrate all of our products.

Training Services

- Gasket and Bolt Technology
- Flange Assembly Best Practices
- Hydraulic Bolt Torquing Awareness
- QA/QC Joint Integrity Management Surveys and Inspection Awareness
- Certified training courses for field technicians

DUTORX - Your field services solution provider

Specialty Equipment

ENERPAC 



Flange Spreaders



Nut Splitters



Flange Alignment



Flange Facing



Drilling and Tapping



Hydraulic Cylinders



Heavy Lifting



Tools

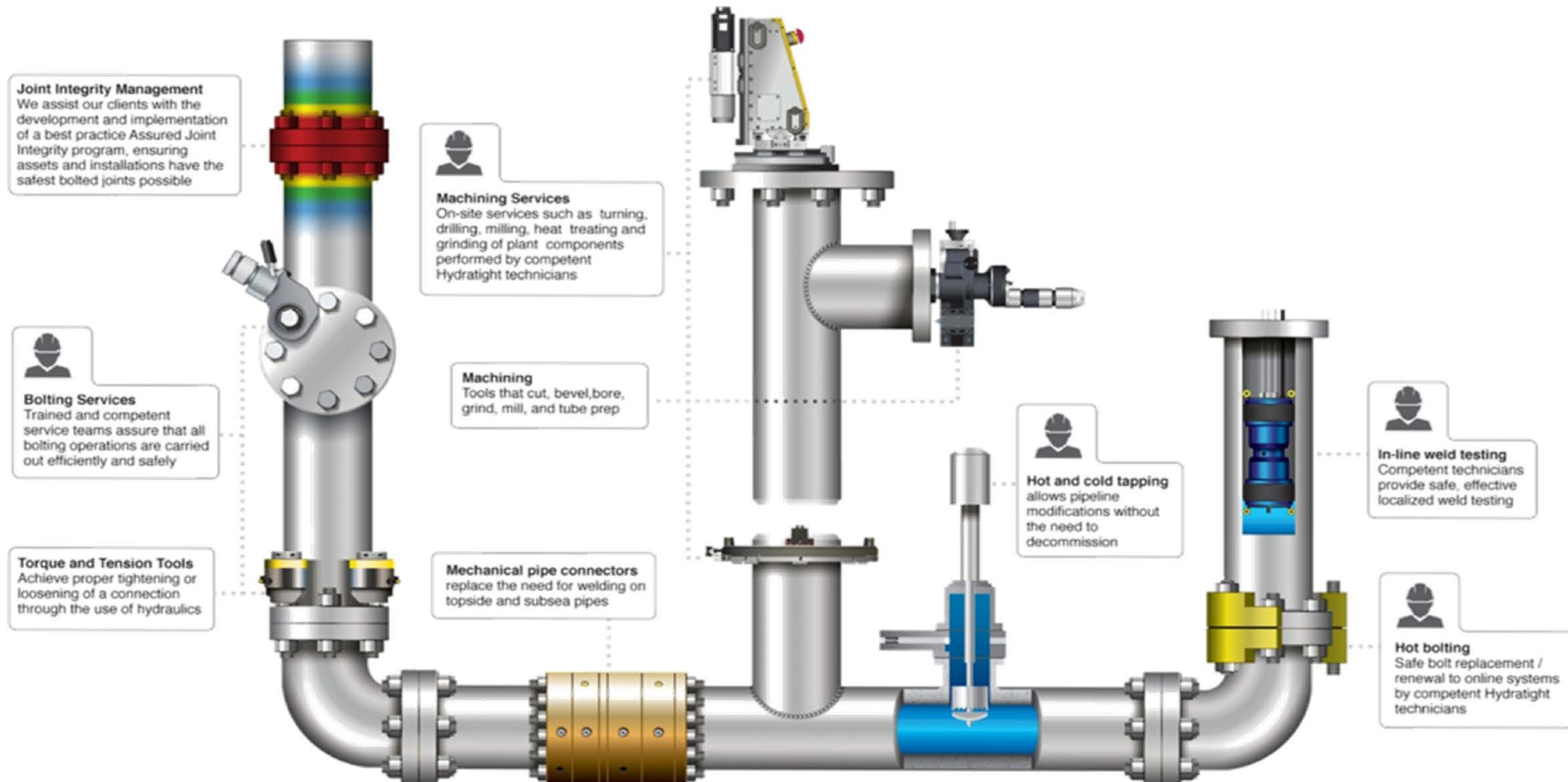


Workholding Tools



Pumps

Summary of Mechanical Services



Technical Authority

hydratight®

Informate 2014

Standard Flange Calculation

Controlled Tightening Procedure

Method: Torque Tension

% Cover: 50%

Lubricant: Molykote 1000 0.11 μ

Standard Flange

Standard: ANSI B16.5

Pressure Class: 600

Pipe Size: 12"

Joint Type: Weld Neck

Joint Facing: Raised Face

Flange Material: Carbon steel Forgings K09011 SA-350...

Gasket: Spiral Wound - Generic Windings

Bolt Type: Imperial

Bolt Material: ASTM-A320 L7 G41400 1Cr-0.2Mo

Tightening Specification: Informate Recommend

Advanced Options

Calculation Output

Bolt Quantity	20	20
Bolt Size	N/A	1 1/4"
Joint Thickness	148.80 mm	5 7/8"
Max Allowable Bolt Stress	615.36 MPa	89,250 Psi
Nut AF	50.80 mm	2"
Residual Bolt Load	188.96 kN	42,480 lbf
Residual Bolt Stress	310.26 MPa	45,000 Psi
Residual Bolt Yield	42.86 %	42.86 %
Tool Pressure Pass 1	1,212 Bar	17,581 Psi
Tool Pressure Pass 2	970 Bar	14,064 Psi
Torque	897 Nm	662 lbf.ft

Bolt Stress (%)

Max Bolt Residual Min/Seat Applied

Torque/Tension Settings

Bolt Load

189 kW

42,480 lbf

Lubricant: Molykote 1000 (0.11μ)

Pump Pressure

Pass 1: 1,212 Bar 17,581 Psi

Pass 2: 970 Bar 14,064 Psi

Process Information

Operating Temperature: 37.78 °C

Operating Pressure: 10.20 MPa

Test Pressure: 15.31 MPa

Sour Service:

Calculate

Tool Selection

Tool Required

Nearest Obstruction: 1,000 mm

AJ3 AquaMAX AM05 AquaMAX AM06 HL01 HL02

AJ3 Brochure

hydratight

Informate 2014

Engineered Joint Calculation

Controlled Tightening Procedure

Method: Torque Tension

Breakout:

Lubricant: Molykote 1000 0.11 μ

Engineered Joint

Joint Configuration: Stud and 2 Nuts

Bolt Type: Imperial

Thread Type: BUN

Bolt Size / Quantity: 2 3/4" 20

Nut Standard: ANSI B18.2.2

Joint Thickness: 100.00 mm

Bolt Hole Diameter: 76.20 mm

Gasket Comp Thickness: 0.00 mm

Tightening Specification: % Yield (Residual) 50%

Bolt Material: ASTM-A320 L43 G43400...

Joint Material 1: Yield Stress = 35 Ksi Generic Carbon...

Joint Material 2: Yield Stress = 35 Ksi Generic Carbon...

Gasket Material: Metal To Metal - Type 1

Calculation Output

Bolt Size	N/A	2 3/4"
Joint Thickness	100.00 mm	3 15/16"
Minimum Bolt Length	310.01 mm	12 3/16"
Nut AF	107.95 mm	4 1/4"
Residual Bolt Load	1,237.72 kN	278,251 lbf
Residual Bolt Stress	361.97 MPa	52,500 Psi
Residual Bolt Yield	50.00 %	50.00 %
Tool Pressure	319 Bar	4,622 Psi
Torque	12,220 Nm	9,013 lbf.ft

Bolt Stress (%)

Max Bolt Residual

Torque/Tension Settings

Torque

12,220 Nm

9,013 lbf.ft

Lubricant: Molykote 1000 (0.11μ)

Pump Pressure

Pass 1: 319 Bar 4,622 Psi

Process Information

Operating Temperature:

Operating Pressure:

Test Pressure:

Sour Service:

Calculate

Tool Selection

Tool Required

Nearest Obstruction: 1,000 mm

RSL20 H404 RSL20 H404 RSL20 RSL30 RSL14

RSL20 Brochure

hydratight

Pipeline Rehabilitation



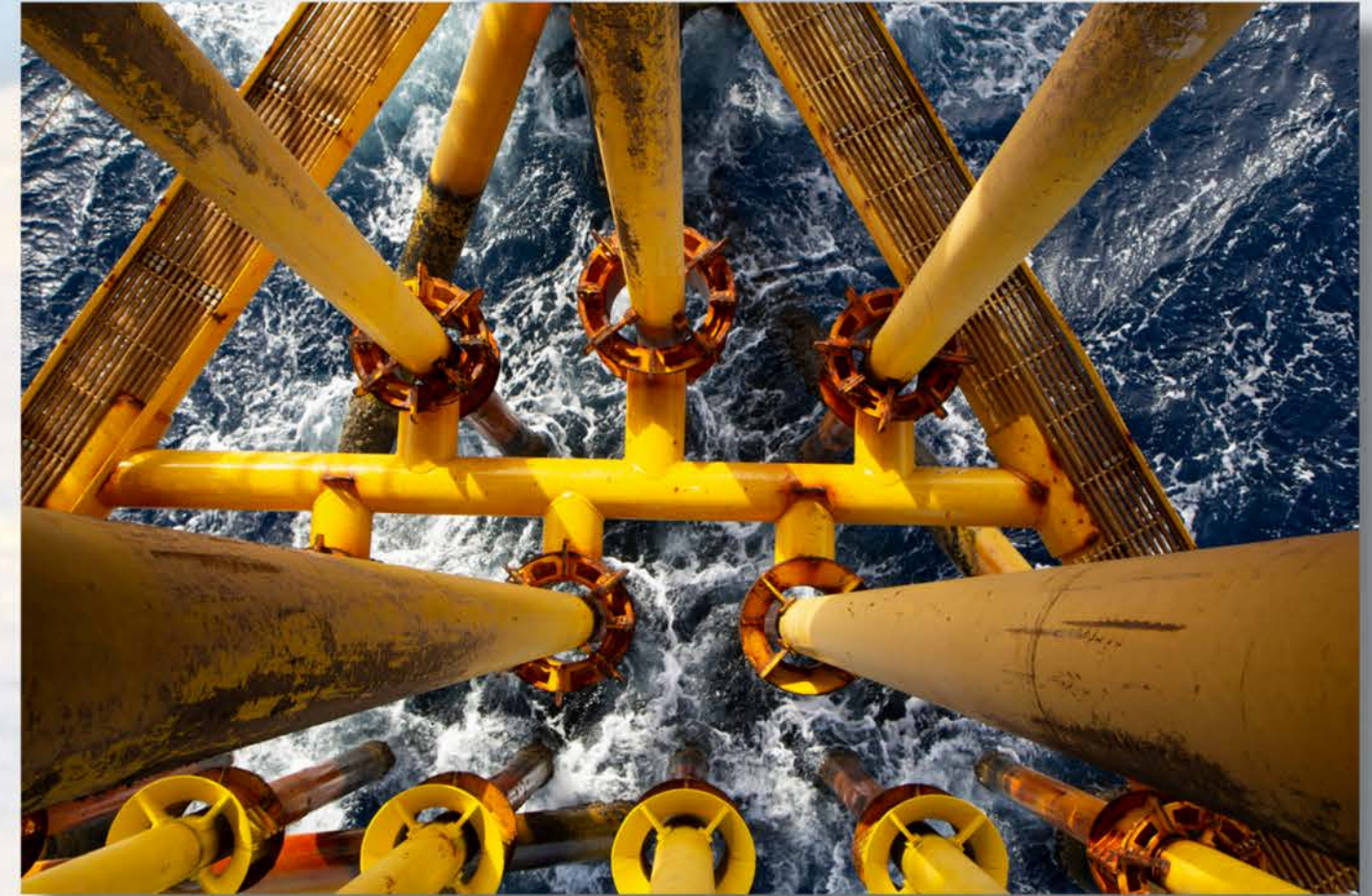
WELLRENEW.



PIPERENEW.



PIGRENEW.



ROV Inspection, Cleaning, Recovery Services



Services:

- (UWILD) Inspections;
 - Underwater Inspections in Lieu of Dry-Docking
 - In-Service Inspection Plans (ISIP)
- Ship Hull & Other Structural Inspection
- Underwater Cleaning;
 - Hulls, Mooring Chains etc.
- Mooring System Cleaning/Inspection
- Tank Inspection
- Pipeline Inspection
- Hull Thickness Gauging
- Search/Rescue/Retrieval
- Security
- Damage Inspections

Inventory Management



03



VEHICLE RENTALS

INDIVIDUAL AND FLEET OPTIONS



Short/Long Term Rentals

Rentals are available on a daily, weekly, monthly or long term basis and every rental comes complete with the following value-added services:



Short & Long Term Lease Options

Short and long term lease options for both corporate and individual clients



Routine Maintenance

Routine scheduled maintenance with provision of replacement vehicle when primary vehicle is being serviced



Choice of Vehicle & Fuel

Choice of vehicle and fuel options - petrol, diesel, CNG, EV



24/7 Support

24/7 customer service and roadside assistance



Competitive Pricing

Additional options can also be added to suit individual requirements.

Go Green! Upgrade to CNG

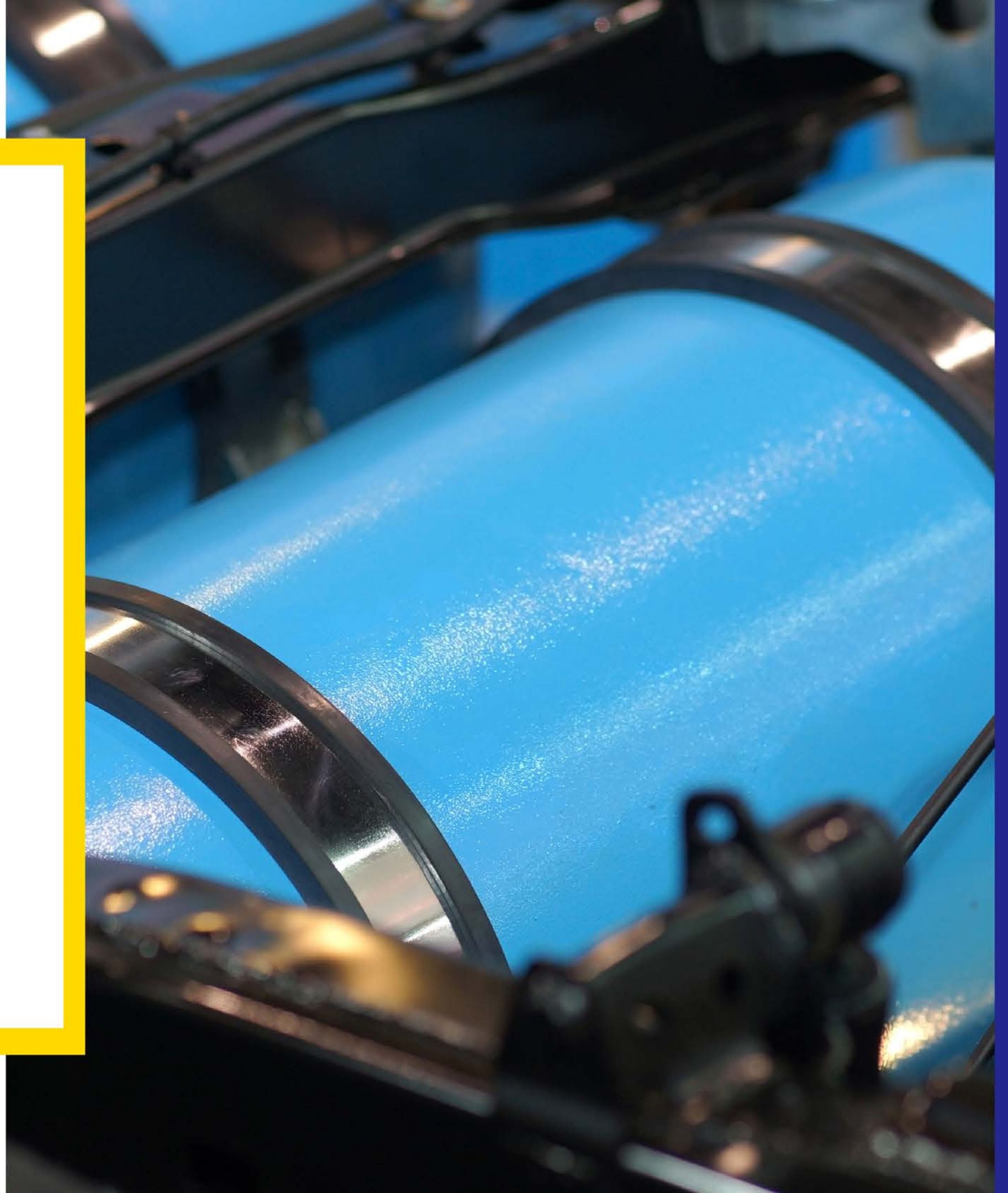
Dumore is a licensed CNG Installer & Service Provider, offering CNG Retrofitting on Gasoline and Diesel vehicles

We are also the largest fleet operator of CNG powered vehicles in the region!

We offer CNG service and inspection

Leasing options can include CNG Fleets

We have driven about 44 million km on CNG!



04



DUMORE
TRANSPORT

TRANSPORTATION

HAULAGE OF MATERIAL, EQUIPMENT,
GENERAL CARGO AND CONTAINERS

Dumore Enterprises Ltd.

Transportation

Dumore's Transportation Division has been managing some of the largest transportation projects in the country for over three decades.

Our transportation services encompass haulage of material, equipment, general and oversized cargo and containers. We are experienced in handling complex projects with specialized equipment for added flexibility to accommodate even the most challenging transportation requirements.

We take the load, so you don't have to!



Our transportation equipment includes:

- Tractor Trucks
- Flatbed crane Trucks, 20 Ton/m to 67 Ton/m
- Tractor Trucks with cranes, 42 Ton/m to 67 Ton/m
- Dumper Trucks
- 4-ton Trucks
- Cement and Dry Bulk Tankers
- 20ft and 40ft Container Chassis
- Lowboy Trailers--30 Ton/m to 120 Ton/m
- Extendable Lowboy Trailers--up to 120 Ton/m
- Extendable Flatbed Trailers--40ft to 82ft
- Drop Deck Trailers

Our drivers/operators are equipped with years of experience and skills, having received Dumore Internal Training as well as being certified in Defensive Driving and trained in First Aid/CPR/Hazmat responses.

We don't just deliver your good safely and on time, we manage every aspect of the task at hand from Route Planning & Journey Management to Lifting Services and Storage Facilities.



05



DUMORE
RENTALS

EQUIPMENT RENTALS

FULL RANGE OF SERVICE & EQUIPMENT RENTALS

Dumore Enterprises Ltd.

Equipment Rentals

Not every project calls for a basic transport and delivery service and that's why Dumore is recognized as an industry leader offering a full range of service and equipment rentals along with 24/7 support to provide solutions uniquely tailored to every project. From heavy lifting of multiple cargoes to the relocation of machinery or equipment, we offer an extensive range of equipment to handle all your cargo requirements.



Our fleet of equipment rentals includes:

- Forklifts from 3-Ton to 20-Ton (with or without Pipe Clamps)
- 35-Ton Cranes
- 12-Ton Rollers
- Backhoes
- Bulldozers
- Mini Excavators
- High Capacity Water Truck

Maintenance and repairs on our fleet of vehicles and equipment are handled onsite by our highly qualified team and follow all factory standards and requirements. Dumore also offers mechanical and structural repairs along with general maintenance of Heavy Goods Vehicles (HGV) outside of our fleet.

Additionally, all rental equipment is equipped with a GPS system that let's us know when a service or repair is required even when equipment is out in the field. So what does that mean to our clients...no stress, no downtime, no loss of revenue!

Rent for the day, the month or the year...we work to suit your needs.



06

LAYDOWN YARDS & COMMERCIAL STORAGE

ONSITE, SECURE STORAGE SOLUTIONS

Dumore Enterprises Ltd.

Laydown Yards & Commercial Storage

Not ready to receive your cargo? No problem. We offer a wide variety of secure storage solutions to suit your needs and length of stay.

Our prime commercial land is conveniently located and within each reach to and from all directions:

- Bellevue Industrial Estate, South Oropouche
- Point Lisas Industrial Estate, Point Lisas



Our onsite facilities include:

- Pipe Yards
- Hardcore Laydown Yards
- Warehousing
- Cold Storage
- Storage Yards
- 24/7 Security

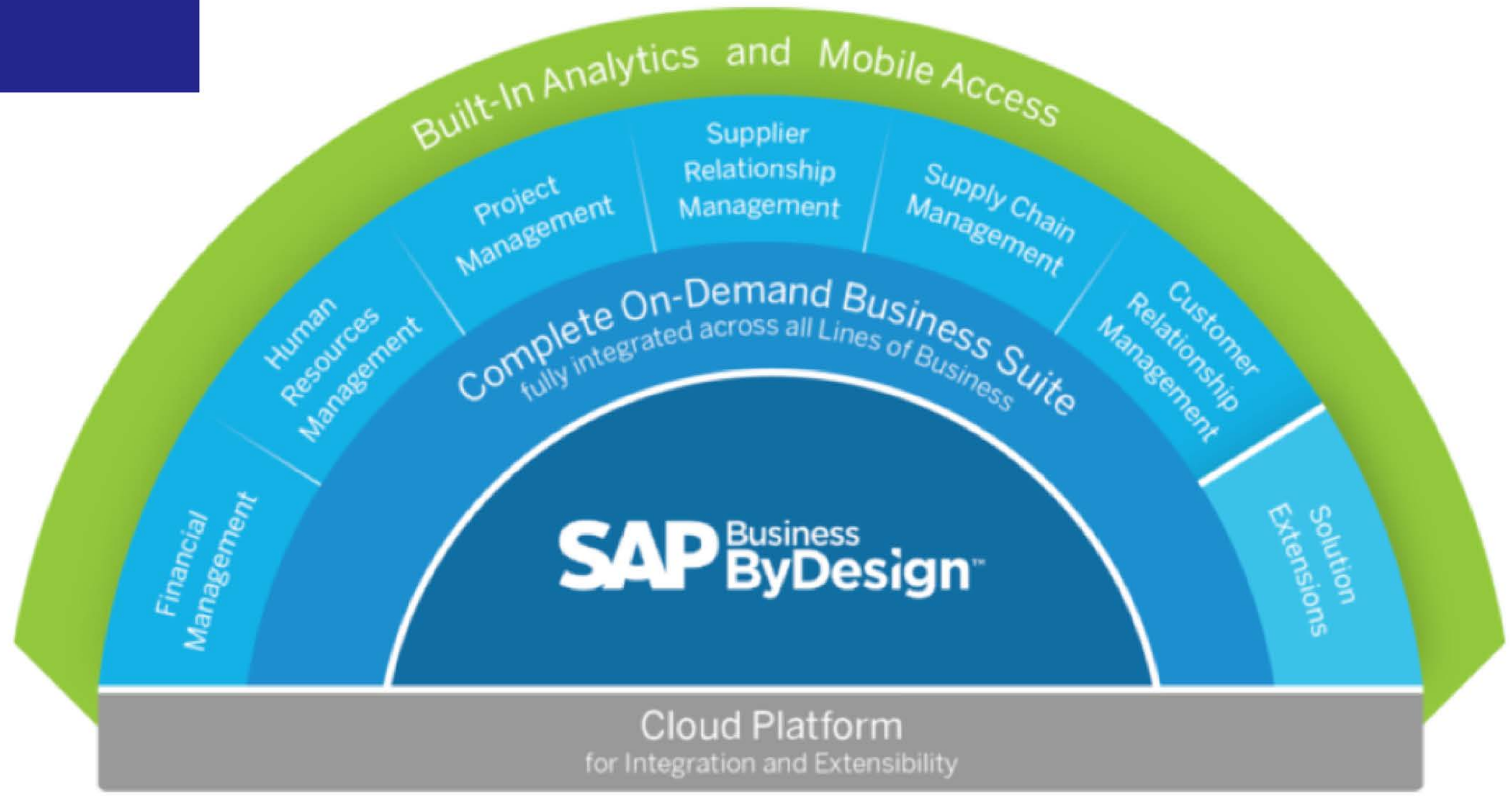
Space can be configured to suit your requirements, from pallet racks and divider walls to fully contained areas, all available for rent by the day, week, month or year.

Bundle your transportation, equipment rentals and storage needs and save today.



ERP SOFTWARE

Dumore runs on 



Dumore Enterprises Ltd.

Our Clients



CONTACT INFO

Oilfield & Industrial Supplies Division

12-20 St. Joseph Road, St. Joseph Village
San Fernando
Trinidad, W.I.

Tel.: (868) 225-4440

Fax: (868) 653-3870 (Sales and Marketing)
(868) 653-5986 (Finance and Admin)

Email: industrial@dumore.co

Transport Division

Lot 11, Bellevue Industrial Estate
St. Mary's Village
Oropouche
Trinidad, W.I.

Tel.: (868) 225-5555

Fax: (868) 677-7670

Email: transport@dumore.co

Dutorx Custom Solutions

25 St. Joseph Road, St. Joseph Village
San Fernando
Trinidad, W.I.

Tel.: (868) 652-2588

Fax: (868) 653-5986

Email: torque@dumore.co

Vehicle Rentals Division

Lot 12-13, Bellevue Industrial Estate
St. Mary's Village
Oropouche
Trinidad, W.I.

Tel.: (868) 677-2910/2952/7695/6335

Fax: (868) 677-7670

Email: rentals@dumore.co



www.dumore.co

**Thanks For
Your Attention!**